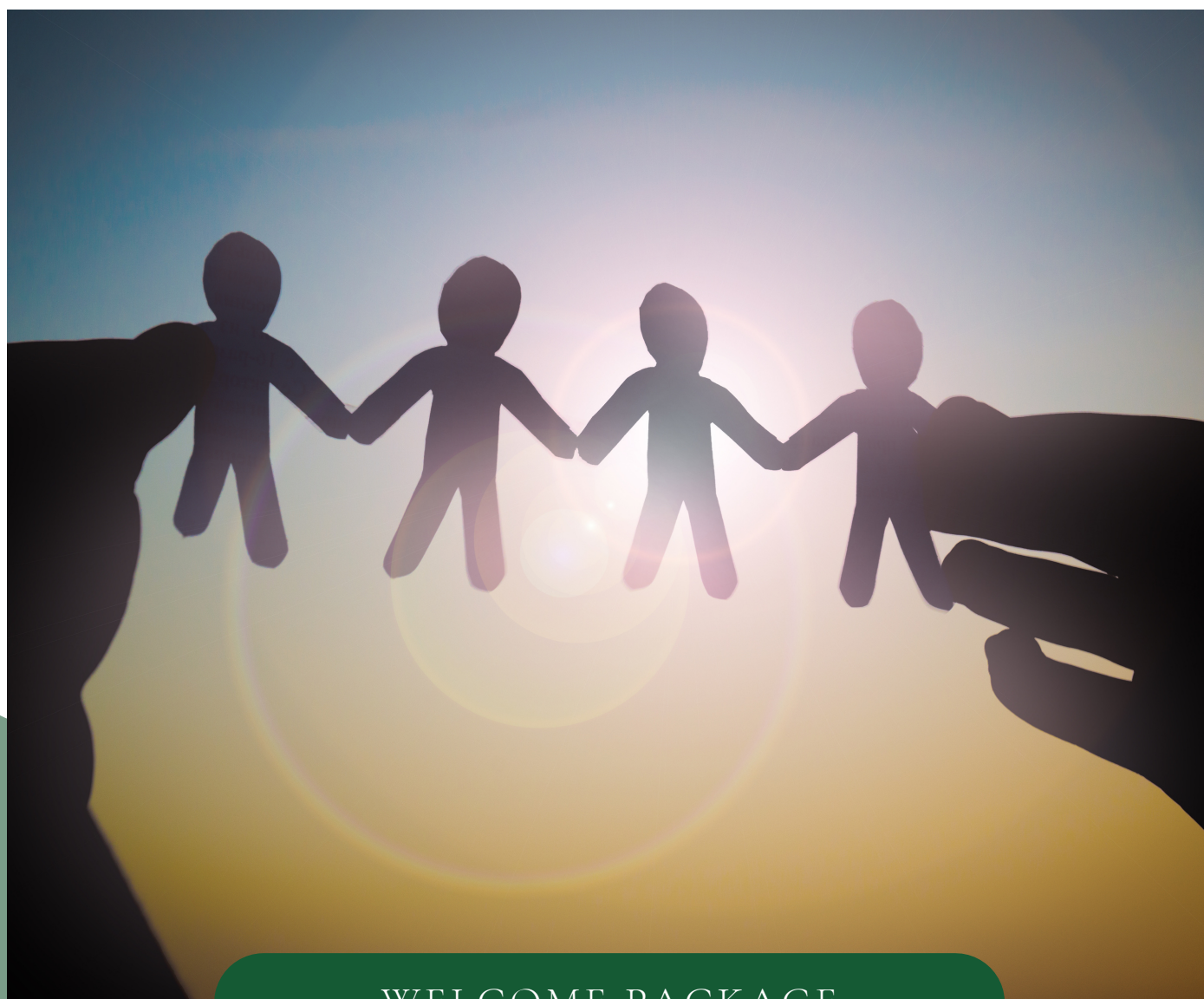


2023 ACEbc PROVINCIAL CONFERENCE

Coordinating Connections: Developing
Aspects of the Community School Approach



WELCOME PACKAGE

WELCOME



Hi There!

My Name is Gayle Beavil, ACEbc President. Welcome to the 2023 ACEbc Provincial Conference!

We are proud to be a part of Community Schools. The Community School Approach is a powerful one that has benefits to the students, families, community and staff involved. An essential piece of this approach is the Community School Coordinator or Director. ACEbc wishes to welcome Coordinators and Directors from across the province to join us in Whistler, BC, to participate in sessions where we will share best practices, explore various Community School models in BC, build our understanding of Indigenous ways of knowing and learning, foster our relationships through collaboration, and grow our own (and our teams') mental health and wellness practices, as we welcome our keynote speaker, Sue Montabello.

Join us. It's been a long time.

**GAYLE BEAVIL,
COMMUNITY SCHOOL CORDINATOR, SD41**



SCHEDULE

THURSDAY, MAY 11TH

4:00pm	Registration opens - Hotel Lobby
5:00pm	Welcome & Building Bridges to Connect - Emerald Room
6:00pm	AGM - Emerald Room
6:45pm	Dinner Provided - Emerald Room
8:00pm	Adjourn

FRIDAY, MAY 12TH

7:30am	Morning Yoga (Optional) - Emerald Room
8:30am	Coffee, Tea, Pastries - Emerald Room
9:00am	Presenter: Sue Montabello - Emerald Room
12:00pm	Lunch Served
12:30pm	Travel to Squamish Lil'wat Cultural Centre
1:00pm	Forest Walk & Traditional Craft - Cultural Centre
3:00pm	Return to Crystal Lodge
3:30pm	Coffee, Tea, & Best Practices World Café - Emerald Room

SATURDAY, MAY 13TH

7:30am	Morning Yoga (Optional) - Emerald Room
8:00am	Check-out
9:00am	Coffee, Tea, Pastries - Emerald Room
9:15am	Concurrent Sessions - Emerald Room
10:30am	Break & Final Check-out
11:00am	Evaluation & Thanks - Emerald Room
11:30am	Final Session: Moving Forward - Emerald Room
12:30pm	Lunch & Adjourn - Emerald Room

PRESENTER, SUE MONTABELLO

The Strengthening Power of "Awe": In our Personal and Professional Lives



Sue Montabello is well known as a passionate teacher, and administrator and university instructor whose work honours and nurtures the diversity of community, enabling others to come together to learn and thrive. Sue worked in the Burnaby School District as Principal for twenty-five years, spending most of her career working as Principal of Community Schools.

Sue is currently adjunct professor in the Faculty of Education where she has worked as a Faculty Associate and Coordinator of Professional Programs and continues her work with Graduate Diploma and Masters programs for practicing K to 12 teachers. At the heart of Sue's work in all these environments is a commitment to the promise and possibilities of community.



SESSIONS

PRESENTER:

SUE MONTABELLO

Sue Montabello, will help us learn about the "science of awe" and how it can impact our physical, emotional and spiritual health. In this session, we will discover more about how to find and seek out awe in nature and in community, and how this can help prevent professional burnout.

SQUAMISH LIL'WAT CULTURAL CENTRE

Led by knowledgeable Cultural Ambassadors, the Interpretive Forest Walk and hands on traditional craft activity will allow us to connect with the land and culture.





CONCURRENT SESSIONS ON COMMUNITY SCHOOL PRACTICES.

Choose one of the sessions, led by skilled BC Coordinators. Details of these sessions will be provided in your welcome package on arrival at the conference.

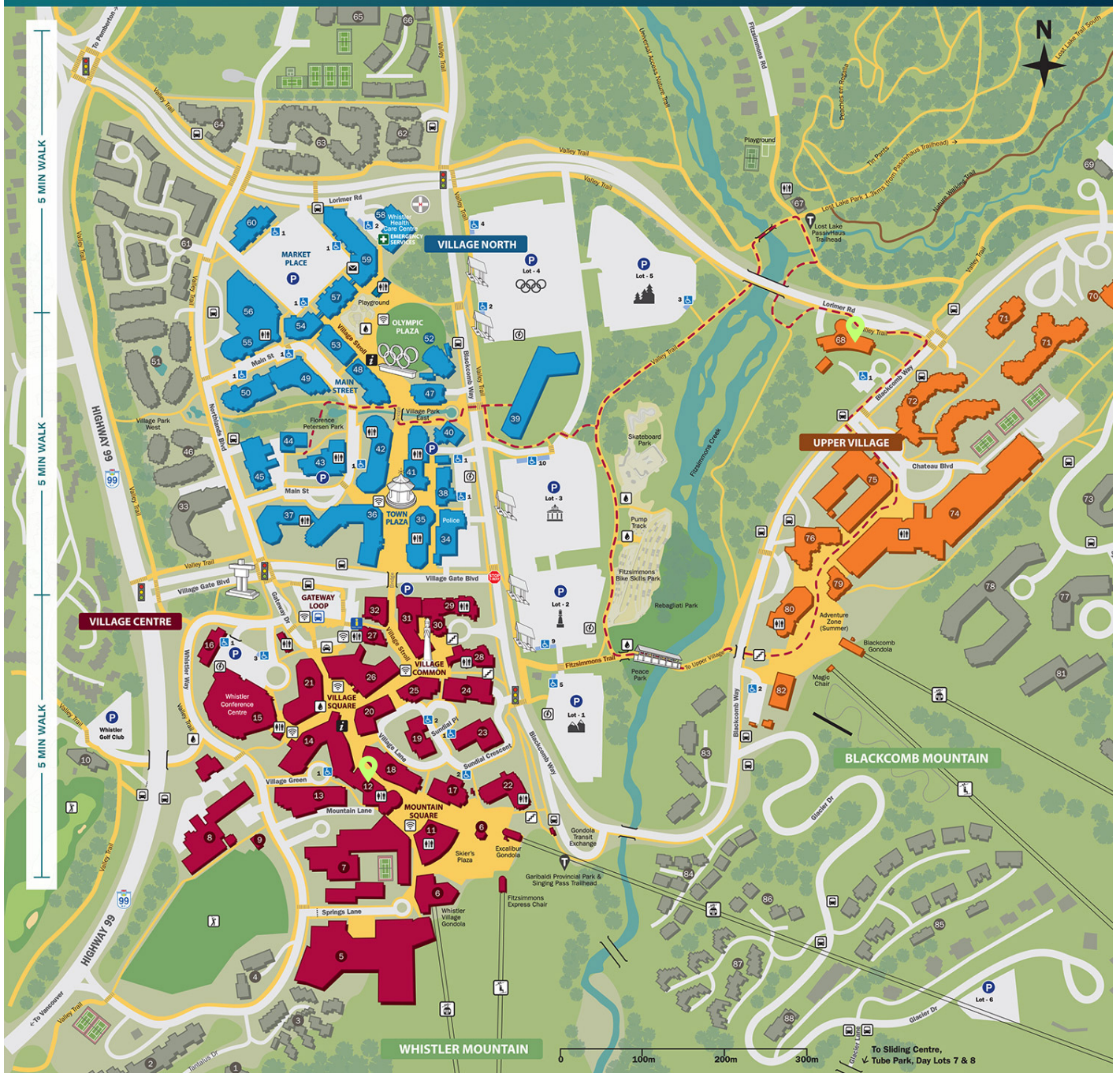
BEST PRACTICES WORLD CAFE

An active, collaborative session in which participants' detail and share favourite and effective strategies, resources, projects and initiatives. The harvest will be shared with the group to create a collection of best practices from across the province.

IMPORTANT CONTACTS

 Email	conference@acebc.org
 Crystal Lodge	1-855-913-4296
 Conference Support	604-999-4771
 Website	acebc.ca

WHISTLER VILLAGE MAP



LEGEND

- **VILLAGE NORTH**
Main Street, Market Place, Olympic Plaza, Town Plaza
- **VILLAGE CENTRE**
Conference Centre, Gateway Loop, Mountain Square, Skier's Plaza, Village Common, Village Square
- **UPPER VILLAGE**
- P **PARKING AREA** whistler.ca/parking
- ♿ **ACCESSIBLE PARKING**
- **PEDESTRIAN PATH**
- **CULTURAL CONNECTOR**
whistler.ca/culturalconnector
- + **EMERGENCY SERVICES**
- + **PUBLIC RESTROOMS**
- H **VISITOR CENTRE**
- H **VILLAGE HOST**
- ↑ **STAIRWAY**
- ↑ **VANCOUVER BUS STOP**
- ↑ **LOCAL BUS STOP**
- T **TAXI**
- G **GOLF COURSE**
- G **GONDOLA**
- C **CHAIRLIFT**
- O **POST OFFICE**
- W **FREE WHISTLER WIFI AREA**
- E **EV CHARGING STATION**
- W **WATER STATION**
BOTTLE FILL / FOUNTAIN
Only available in summer
- T **TRAILHEAD**

VILLAGE DIRECTORY

- | | | | | |
|---|--|---|---|--|
| <p>INFORMATION</p> <p>27 Whistler Visitor Centre</p> <p>EMERGENCY SERVICES</p> <p>58 Ambulance
34 Fire
34 R.C.M.P. (Police)
58 Whistler Health Care Centre</p> <p>MEDICAL & DENTAL SERVICES</p> <p>42 Town Plaza Medical Clinic
36 Whistler Dental Office
50 Whistler Smiles
46 Stoney Creek Sunpath
41 Bailey Nelson</p> <p>ACCOMMODATIONS</p> <p>8 Aava Whistler Hotel
14 Adara Hotel
50 Alpenglow
26 Blackcomb Lodge
11 Carleton Lodge
33 Cascade Lodge
18 Clock Tower Hotel
12 Crystal Lodge
36, 37 Delta Whistler Village Suites
72 Embark
18 Executive Inn
74 The Fairmont Chateau Whistler
20 Fitzsimmons Condos
71 Four Seasons Resort Whistler
83 The Gables
75 Glacier Lodge
62 Glacier's Reach
22 Granite Court
21 Hearthstone Lodge
71 Hilton Whistler Resort & Spa
76 Le Chamois</p> | <p>13 Liel Whistler Hotel
55 Market Pavilion
57, 59 Marketplace Lodge
23 Mountside Lodge
1 Northern Lights
22 Pan Pacific Whistler Mountside
29 Pan Pacific Whistler Village Centre
16 Pangea Pod Hotel
7 Powder's Edge
21 Rainbow Building
16 Royal Suite
84 Snowy Creek
25 St. Andrews House
51 Stoney Creek
49 Stoney Creek Sunpath
49 Summit Lodge Boutique Hotel
17 Sundial Boutique Hotel
64 Symphony at Whistler
2 Tantalus Lodge
35, 41, 42 Town Plaza Suites
48, 53 Tyndall Stone Lodge
61 Valhalla/Twin Peaks Resorts/
Stoney Creek North Star
32 Village Gate House
5 The Westin Resort & Spa
30 Whistler Peak Lodge
45 Whistler Pinnacle
19, 24 Whistler Village Inn & Suites
21 Windwhistle</p> <p>BUILDING NAMES</p> <p>1 Northern Lights
2 Tantalus Lodge
3 Telemark Place
4 Mountain Edge
5 The Westin Resort & Spa</p> | <p>6 Whistler Village Gondola & Whistler Blackcomb Guest Relations + Tickets
7 Hilton Whistler Resort & Spa
8 Aava Whistler Hotel
9 Whistler Golf Club Driving Range/
Whistler Hel-Skiing Powder Hut (Winter)
10 Whistler Golf Club
11 Carleton Lodge
12 Crystal Lodge
13 Liel Whistler Hotel
14 Adara Hotel
15 Whistler Conference Centre
52 Cornerstone Building
17 Sundial Boutique Hotel
18 Pangea Pod Hotel, Clock Tower Hotel & Executive Inn
19, 24 Whistler Village Inn & Suites
20 Fitzsimmons Condos
22 Pan Pacific Whistler Mountside
23 Mountside Lodge
25 St. Andrews House
26 Blackcomb Lodge/
Blackcomb Professional Building
27 Gatehouse Building
31 Whistler Village Centre
29 Pan Pacific Whistler Village Centre
32 Village Gate House
33 Cascade Lodge
34 Police, Fire Hall, Bylaw (Emergency 911)
35 Town Plaza Suites, Bear Lodge
36, 37 Delta Whistler Village Suites
38 Municipal Hall</p> | <p>39 Audain Art Museum
40 Maury Young Arts Centre
41 Town Plaza Suites, Eagle Lodge
42 Town Plaza Suites, Deer Lodge
43 Whistler Public Library
44 Whistler Museum & Archives
45 Whistler Pinnacle
46 Stoney Creek Sunpath
47 Brewhouse Restaurant & Pub
48, 53 Tyndall Stone Lodge
49 Summit Lodge Boutique Hotel
50 Alpenglow
51 Stoney Creek Lagoons
52 Whistler Olympic Plaza
54, 57, 59 Marketplace Lodge
55 Market Pavilion
56 Fresh Street Market
58 Whistler Health Care Centre
60 Marketplace Professional Building
61 Valhalla/Twin Peaks Resorts/
Stoney Creek North Star
62 Granite Court
63 Glacier's Reach
64 Symphony at Whistler
65 Whistler Racquet Club
66 Montebello Townhomes
67 Lost Lake PassivHaus
68 Squamish L'Inuit Cultural Centre
69 Fairmont Chateau Whistler Golf Club
70 Four Seasons Residences Whistler
71 Four Seasons Resort Whistler
72 Embark
73 Marquise
74 The Fairmont Chateau Whistler
75 Glacier Lodge</p> | <p>76 Le Chamois
77 Greystone Lodge
78 Aspens
79 Milestones Grill + Bar
80 Whistler Blackcomb
Guest Relations + Tickets
81 The Woodrun Lodge
82 Whistler Blackcomb
Administration & Whistler Kids
83 The Gables
84 Snowy Creek
85 Pinnacle Ridge
86 Cedar Hollow
87 Cedar Ridge
88 Snowcrest</p> |
|---|--|---|---|--|

WHISTLER.COM/VILLAGE-DIRECTORY | 1.800.944.7853

[f](#) [t](#) [i](#) [@GoWhistler](#)

ASK WHISTLER
LIVE CHAT

Get insider tips on things to do, restaurant suggestions, directions and visitor information.

Need assistance? Just Ask Whistler!

[Facebook Messenger @GoWhistler](#)

[WhatsApp 1.604.265.9600](#)

[SMS 1.604.265.9600](#)
(Standard SMS/text rates apply)

WHISTLER.COM/CHAT

WHISTLER
BRITISH COLUMBIA



THANK YOU!

ACEbc is committed to building community and school partnerships, integrating services, and promoting life-long learning to benefit children, families and communities.

We thank you for joining us, sharing your expertise and unique perspective, and adding to the development of the Community School approach in British Columbia.

ACEBC.CA